

KF403HM

Semi Automatic Almond Case Former - Hot Melt



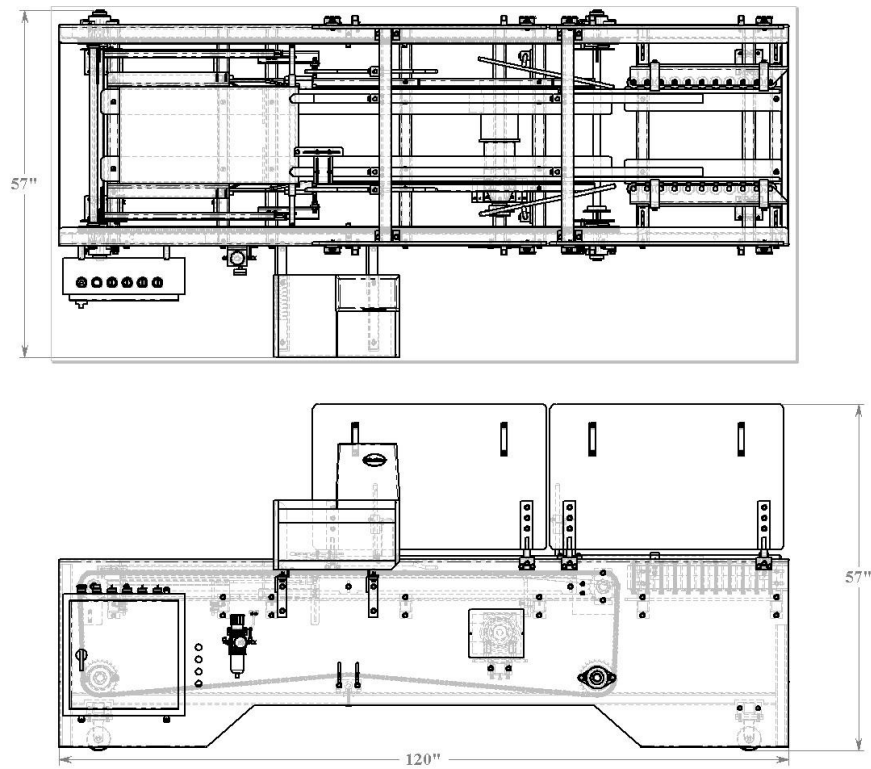
Designed and engineered for versatility, affordability and reliability. Side seals 25# & 50# Almond FOL cases, utilizing box blank. Case former speeds up to 15 cases per minute

KLIPPENSTEIN CORPORATION

5399 South Villa Avenue, Fresno, California 93725 / 888-834-4258

| Standard Features | Optional Features |
|---|---|
| Machine Performance: Up to 15 CPM. 120"L x 36"W. 28" Infeed Height | Safety Shield Interlock Switches |
| Machine Safety: 1/2" Lexan Shields and Fully Guarded Pinch Points | 480VAC / 3 Phase/ 60Hz |
| Power Req: 240VAC / 3 Phase / 60 Hz. | Automatic lubrication system |
| Drive Shafts & Adjust Screws: Stainless Steel, Precision Ground Shafts and ACME Thread | Corrosion resistant construction |
| Case Advance: Heavy Flight Bar | Case Sizes outside of Standard Range |
| Corrosion Protection: Powder coating and zinc plating on all surfaces. | Spare Parts Kit |
| Standard Case Range: 50# Almond Box | |

DIMENSIONAL DRAWING



KLIPPENSTEIN CORPORATION

5399 South Villa Avenue, Fresno, California 93725 / 888-834-4258